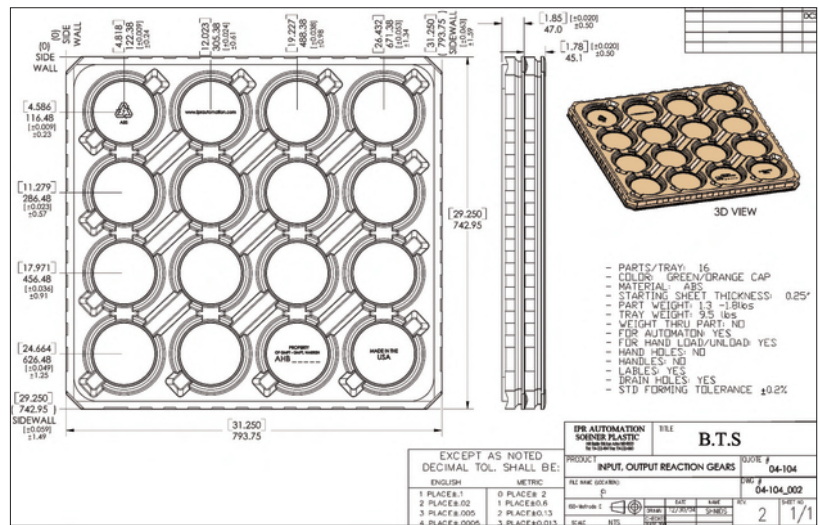


Quality Control

Using state of the art equipment we are able to perform ongoing inspection of thermoforming products as they are produced on site in our manufacturing facility. With the use of a Faro Technologies portable CMM we utilize CAD-to-Part-analysis to ensure all parts are within tolerances and analyze trends. The reports generated are used to establish and maintain high quality production in each project and ensure design criteria are maintained.



Measuring pocket to pocket repeatability with the faro arm



Drawing of CAD 3D model with tolerances

Plastic Consistency

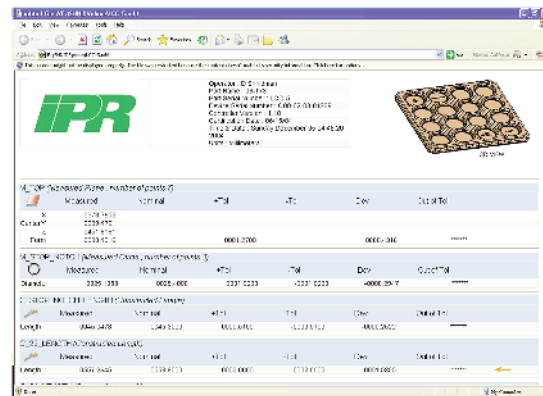
(This value is given as a percentage of distance from one feature to another)

ABS (utility) ± 0.2%

ABS (virgin) ± 0.1%

HDPE (utility) ± 0.5%

HDPE (50/50) ± 0.3%



CMM REPORT OF (R1-238)